

ConocoPhillips SRU Project

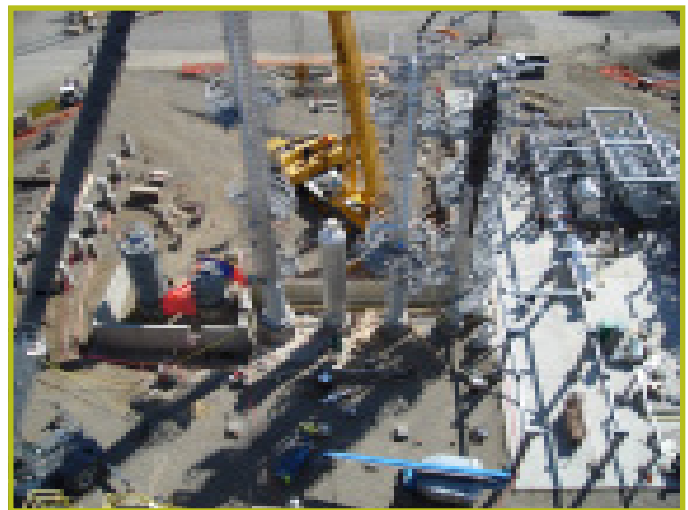
Blaine, WA

JH Kelly constructed a Sulfur Recovery Unit at the ConocoPhillips Ferndale refinery with ENGlobal Engineering Inc. ENGlobal subcontracted to JH Kelly the civil, structural, mechanical and instrumentation work scopes. The project started in May 2006 and was mechanically complete in December 2006.

JH Kelly self-performed the civil scope which included over 1,000 cy of concrete, 3,000 lf of underground piping and 9,000 cy of backfill. JH Kelly installed over 400 lf of 8' 7" tall retaining wall. To maintain the fast track schedule, JH Kelly chose to backfill the unit inside the retaining wall with 1,000 cy of CDF. This and other creative ideas led to the civil work finishing on schedule despite several late material delivery issues.

The mechanical, structural and instrumentation scope of this project was roughly 65% modular. Fifteen modules were built by the JH Kelly fabrication shop in Longview, WA and shipped to the jobsite via truck and trailer. One module per day was received and set for almost one month. During this same time, JH Kelly set 34 pieces of equipment including four columns, two MDEA tanks, four blowers, one compressor, eight pumps, five exchangers, three air coolers, one reactor, a 150' tall incinerator stack and five smaller miscellaneous pieces of equipment. JH Kelly installed nearly 16,000 lf of piping in the field not including the pipe installed in the module fabrication shop.

JH Kelly safely managed, scheduled and coordinated several subcontractors including electrical, painting, refractory and scaffolding.



Special points of interest:

- 15 modules fabricated at JHK shop and shipped to job site
- 65% modular
- 7-month duration