

Block 42

Portland, OR

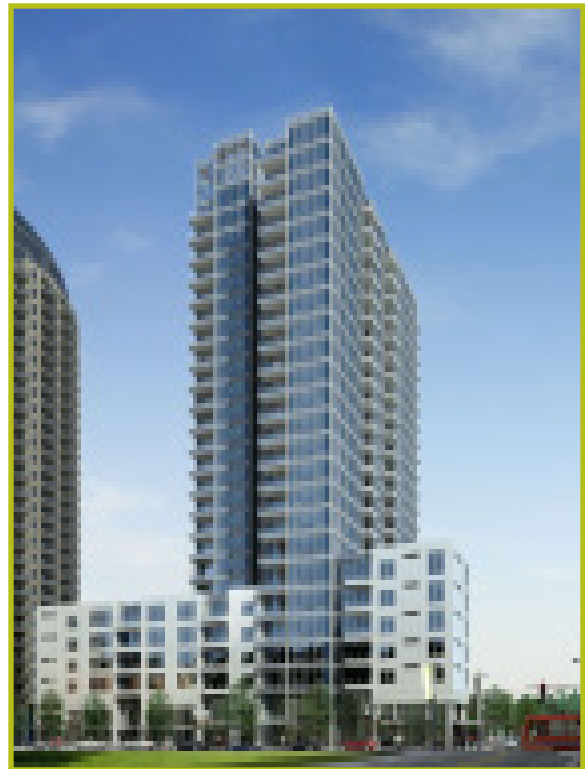
JH Kelly has been hired to provide the mechanical and plumbing services on a new tower in the South Waterfront area. The project consists of a three-level underground parking garage and 25 stories of above-grade residential apartments. The first seven stories above grade will consist of a broad podium which will include retail space on the ground floor with apartments above. The current projected apartment unit count is 303. The overall project is 455,000 square feet.

JH Kelly's scope will consist of design/build underground and above ground plumbing, HVAC (Wet and Dry), HVAC controls, water and air balancing, and commissioning & start-up assistance.

JH Kelly will also provide owner training of all building plumbing and mechanical systems.

The design is complete with the construction start date pending.

Customer: Hoffman Construction Company



Special points of interest:

- 303 units plus retail space
- 25 stories above grade
- Developer: Prometheus Real Estate Group
- Architect: GBD Architects, Inc.